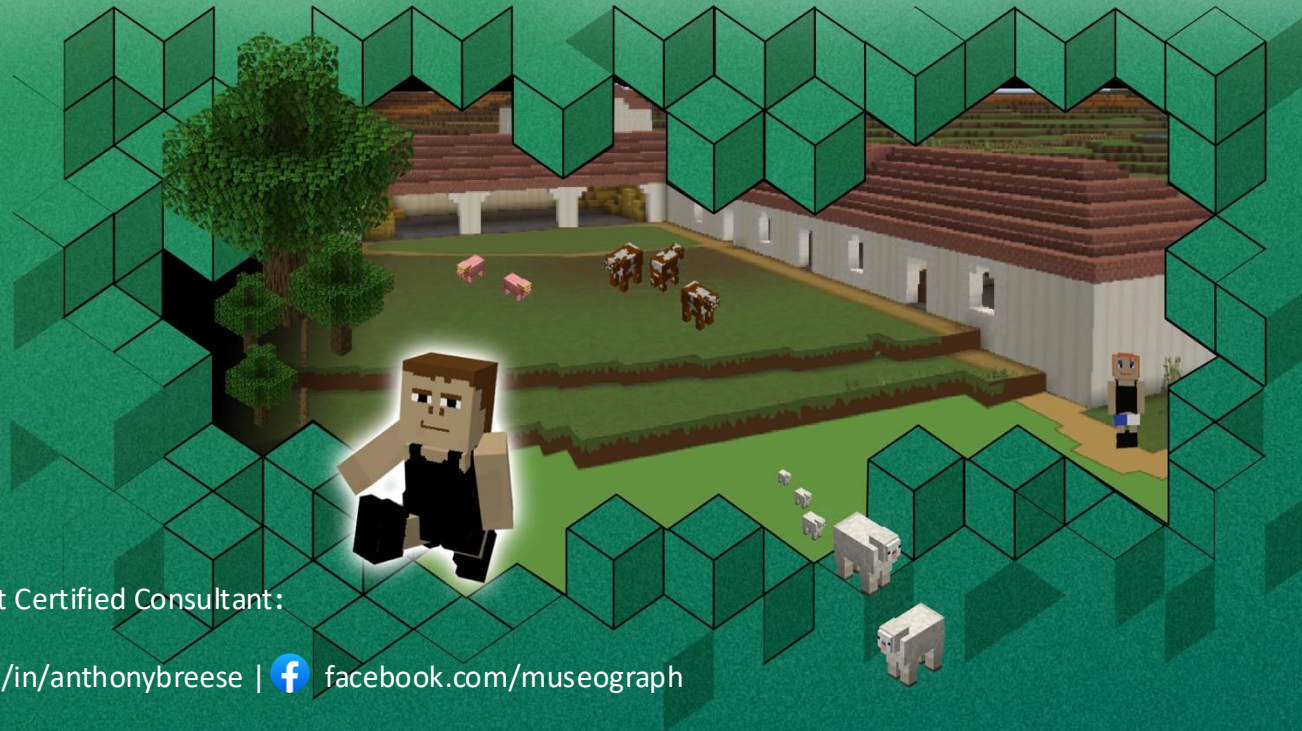




Sow *the* Seed






MĀTIKI MINECRAFT



ANTHONY BREESE

MoE-Accredited PLD Facilitator / Microsoft Certified Consultant:

Mobile: +64 21 298 0810

 @breesy.bsky.social |  linkedin.com/in/anthonybrees |  facebook.com/museograph
anthonymuseograph.co.nz

Make sure you've downloaded Minecraft: Education Edition v1.21.10
from aka.ms/download.

Tikanga whakatōpū taonga
Museograph.nz

**Unuhia te pō, te pō whiri mārama
Tomokia te aō, te aō whatu tāngata
Tātai ki runga, tātai ki raro, tātai aho rau
Haumi e, hui e, tāiki e!**

From confusion comes understanding
From understanding comes unity
We are interwoven, we are interconnected
Together as one!



Tikanga whakatōpū taonga
Museograph.nz

KIA ORA TĀTOU

GREETINGS ALL

KO SADDLE HILL TE MAUNGA

SADDLE HILL IS THE MOUNTAIN

KO TAIERI TE AWA

TAIERI IS THE RIVER

NŌ MOSGIEL AHAU

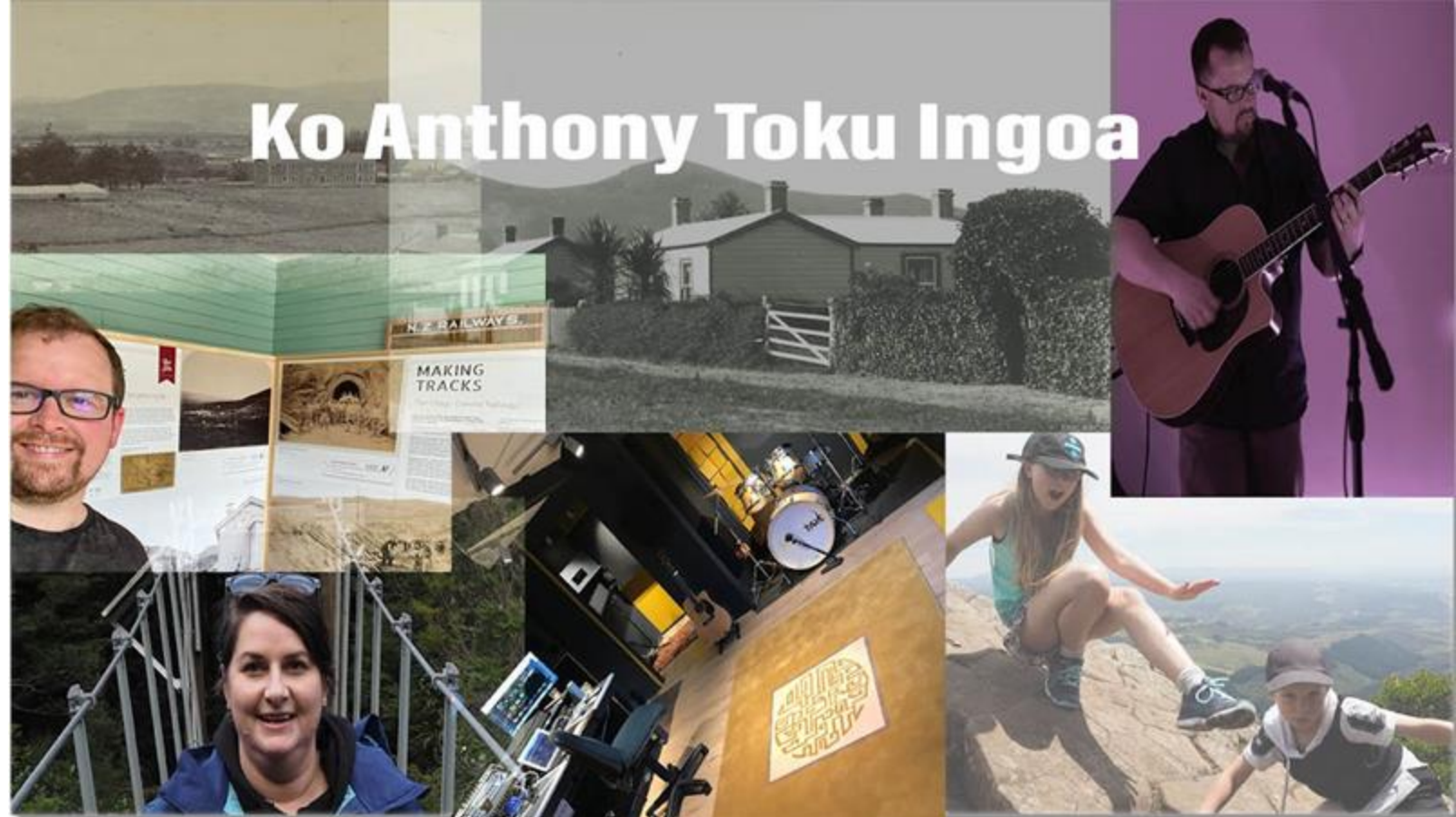
I AM FROM MOSGIEL

KO BREESE TŌKU WHĀNAU

BREESE IS MY FAMILY

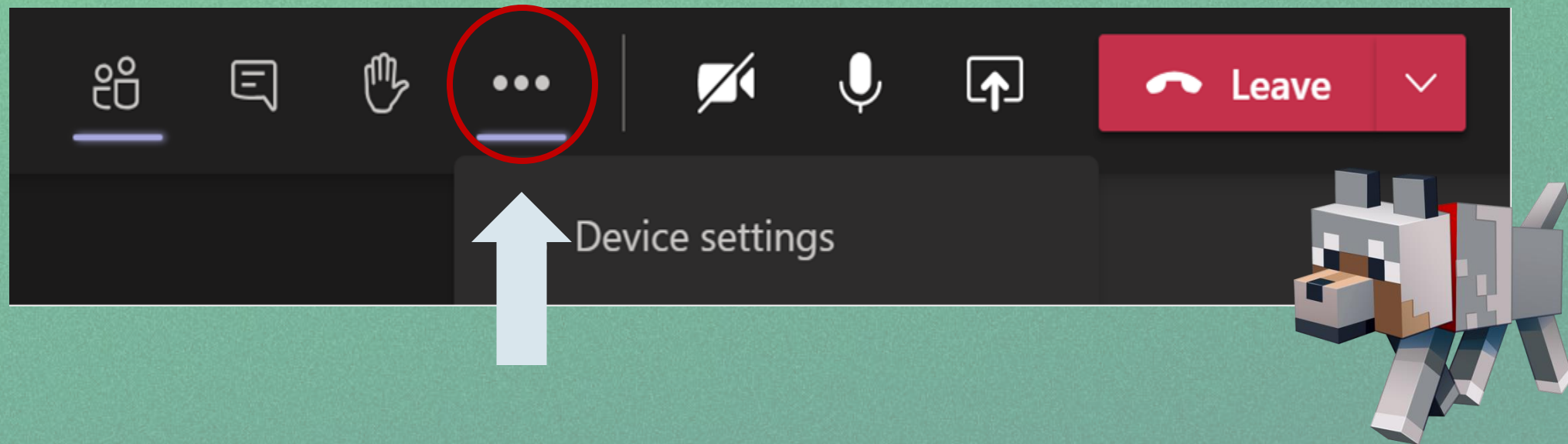
KO ANTHONY TŌKU INGOA

MY NAME IS ANTHONY



AUDIO CHECK

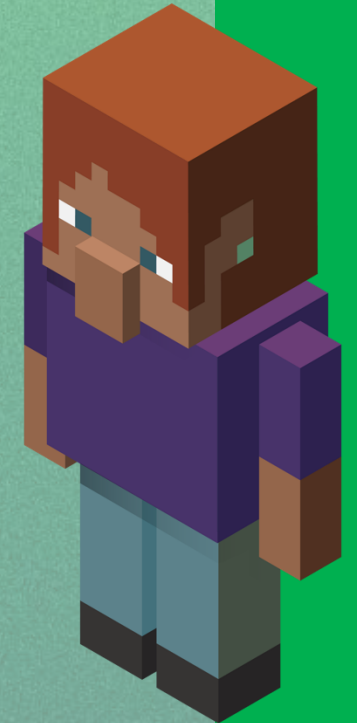
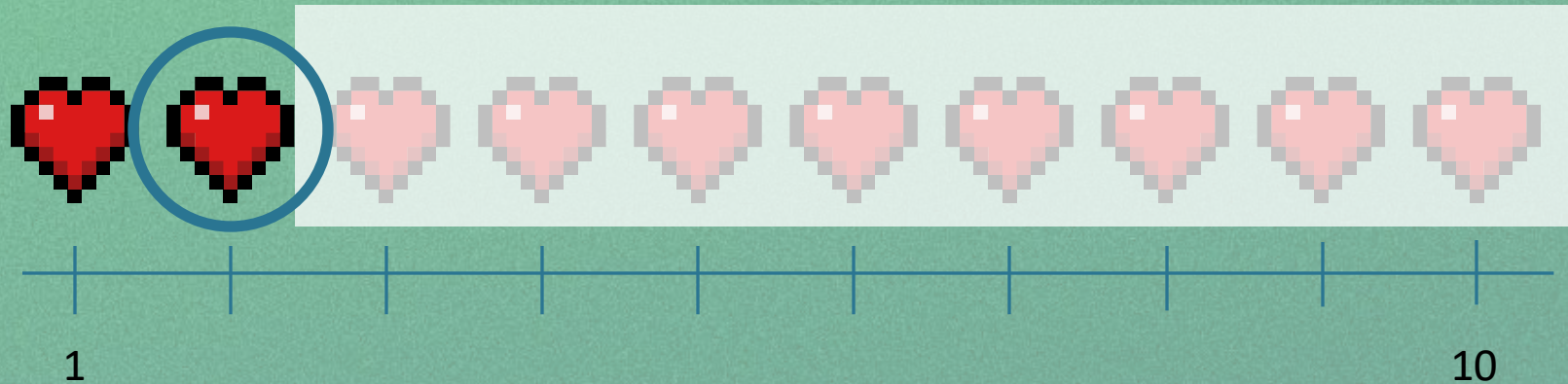
You should be able to hear music playing. If you don't, check your audio settings in Teams by selecting the ellipsis icon in your meeting toolbar.



INTRODUCE YOURSELF

On a scale of 1 to 10, how ready are you to use Minecraft: Education Edition in your classroom or education setting?

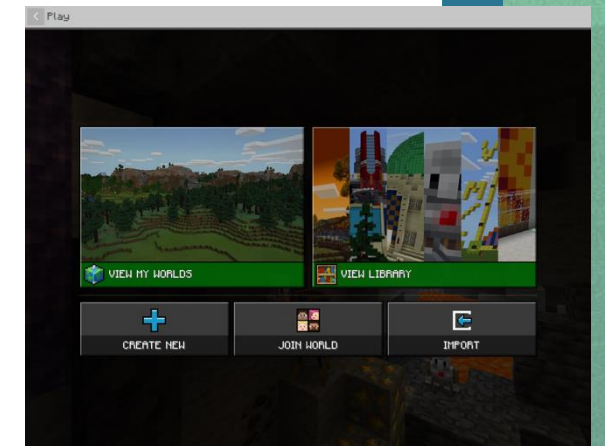
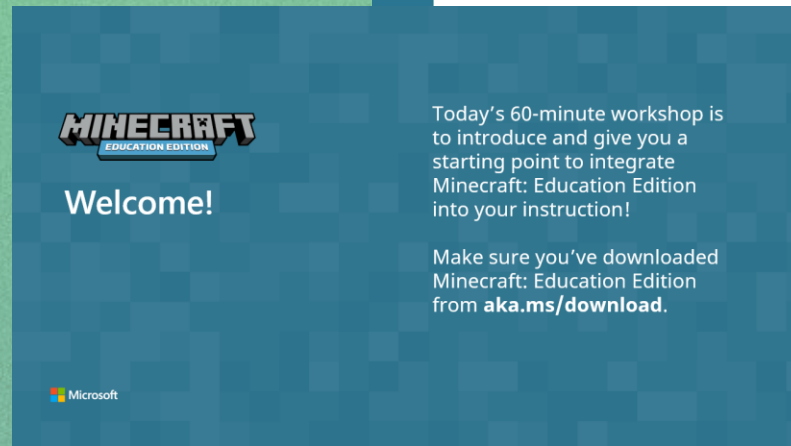
2



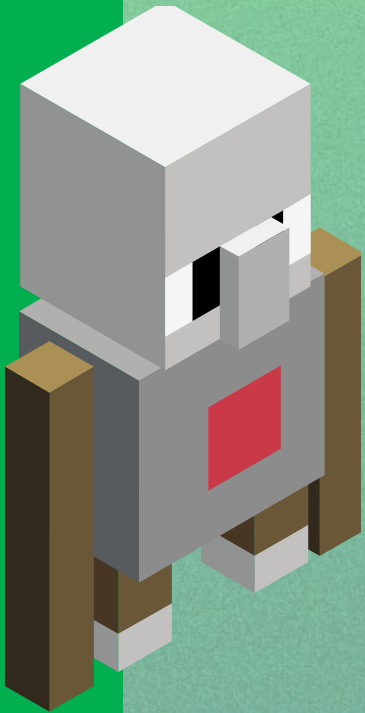
ONLINE WORKSHOP SETUP

If joining workshop virtually, it is helpful to see both windows.

Use screen or two devices if possible.



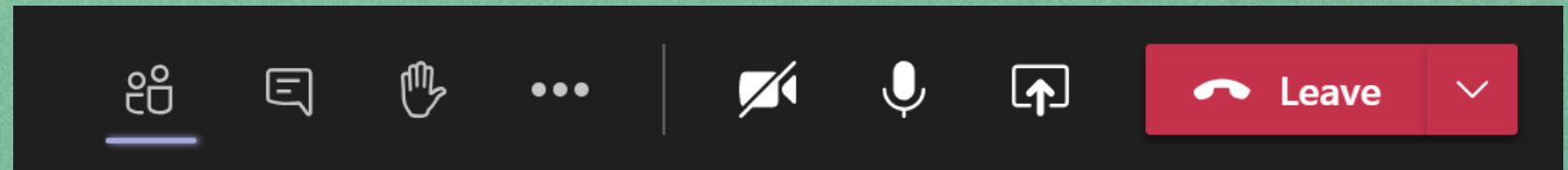
PARTICIPATE IN A TEAMS MEETING



Show chat
messages

Access
Additional
call controls

Mute or
unmute
yourself



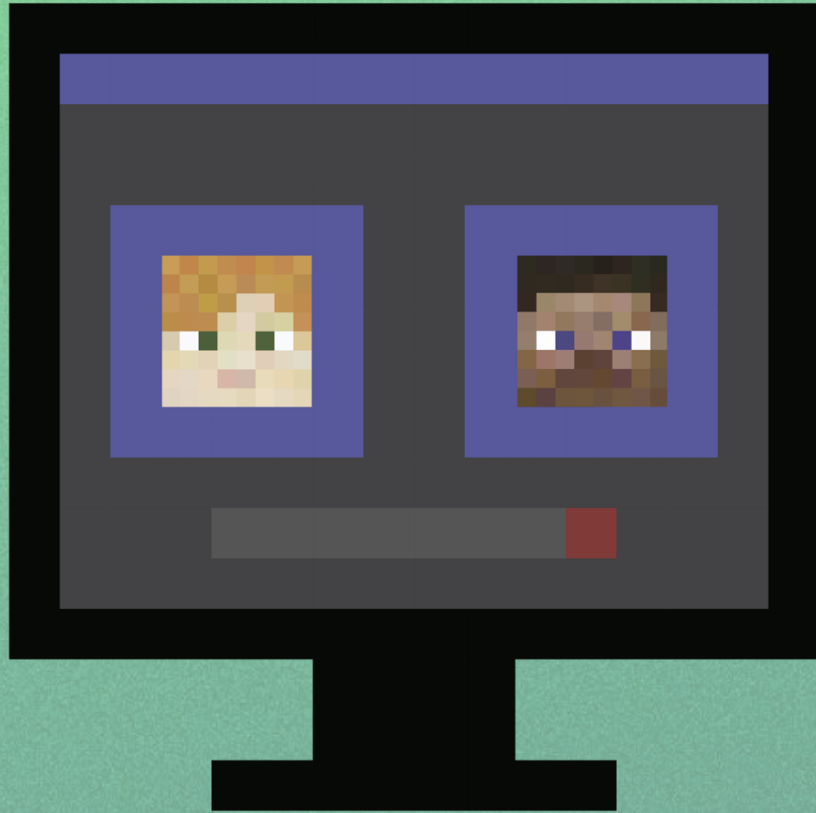
Show / add
participants

Raise your
hand

Turn your video
feed on/off.

Share screen
& sounds
from your
computer

TEAMS MEETINGS BEST PRACTICES



Keep your microphone muted until needed.



Should your video be on? It's up to you!
Consider your background and bandwidth.



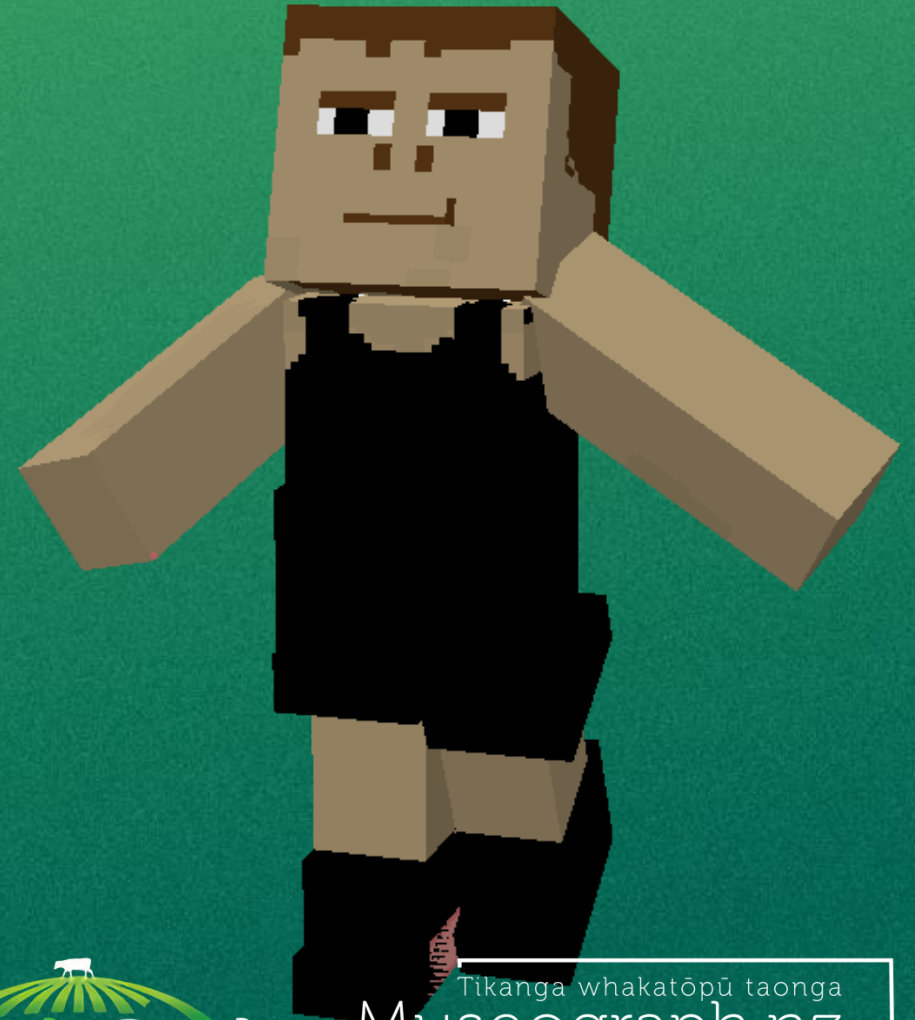
Keep your microphone muted until needed.



Keep your microphone muted until needed.

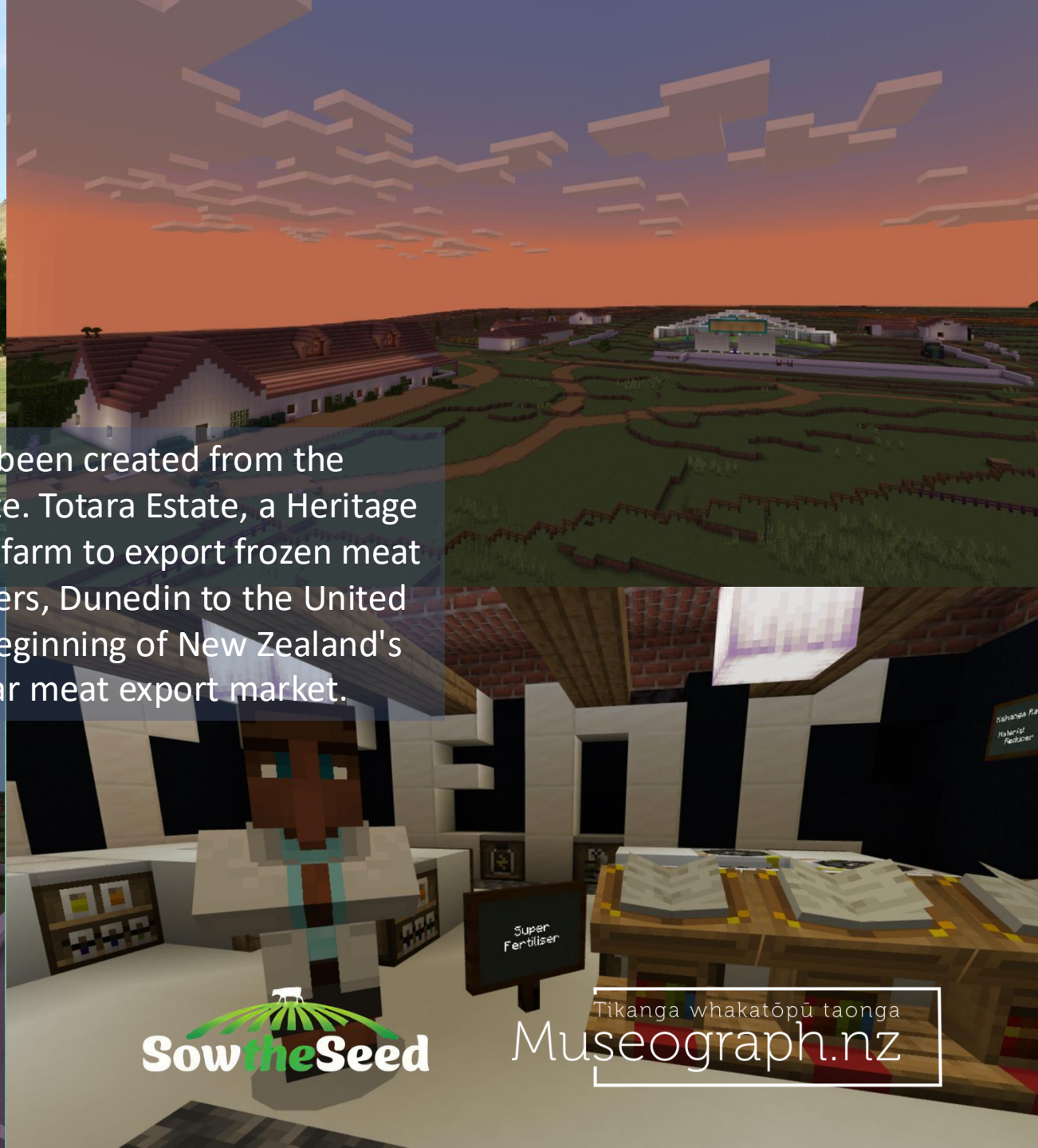
TODAYS PLAN

1. What is Mātiki Minecraft?
2. How to download Mātiki Minecraft World
3. Opening the world on different devices
4. Joining the teachers world
5. Explore Mātiki Minecraft
6. How to teleport in Minecraft
7. Using a book and quill
8. Taking Photographs in Minecraft
9. Completing tasks and Challenges
10. How students showcase their work





Mātiki Minecraft has been created from the topography of Totara Estate. Totara Estate, a Heritage property and was the first farm to export frozen meat in 1882, from Port Chalmers, Dunedin to the United Kingdom. This was the beginning of New Zealand's now multi-billion-dollar meat export market.




Sow the Seed

Tikanga whakatōpū taonga
Museograph.nz

Mātiki:

An agricultural tool shaped like a pickaxe, with an adze and a chisel edge as the ends of the head. [Te Aka Māori Dictionary](#)

What is Mātiki Minecraft

Developed by Sow the Seed, HATA, and Agribusiness in Schools, in collaboration with Anthony Breese from Museograph, Mātiki Minecraft is a unique educational tool set in Totara Estate, Oamaru.

This immersive world engages students with detailed information and real-life challenges related to the primary sector.



How to download and
import your world into
Minecraft?

www.sowtheseed.org.nz



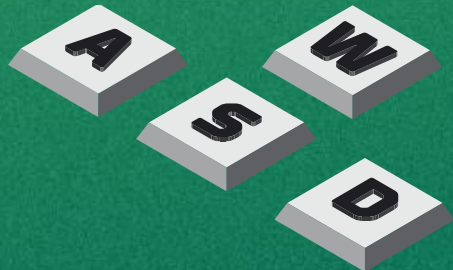
5 Minute
break to get
solve any
issues



How to Navigate Mātiki Minecraft

NAVIGATING BASICS

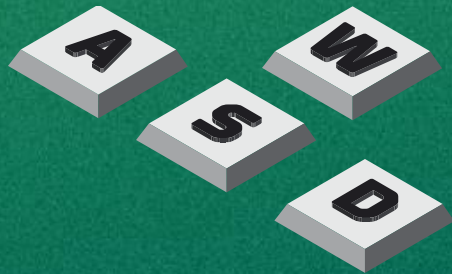
Here's all the items
you see on your
screen and what
they mean.



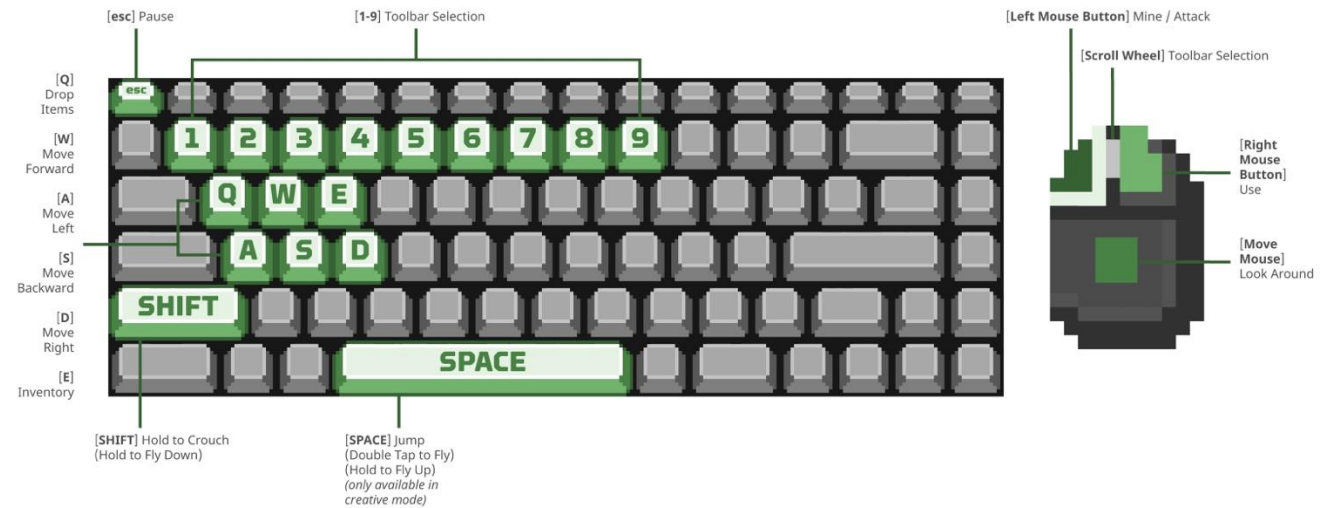
NAVIGATING BASICS

And here's what they all look like on your keyboard. We promise, it starts to become familiar quick!

W, S, A, and D make you move forward, back, side to side, and jumping and flying is via the **spacebar (once or double tap)**.



CONTROLS DIAGRAM KEYBOARD COMMANDS



ACQUIRING ITEMS

“e” opens inventory –
 anything you want in
 the Minecraft world!

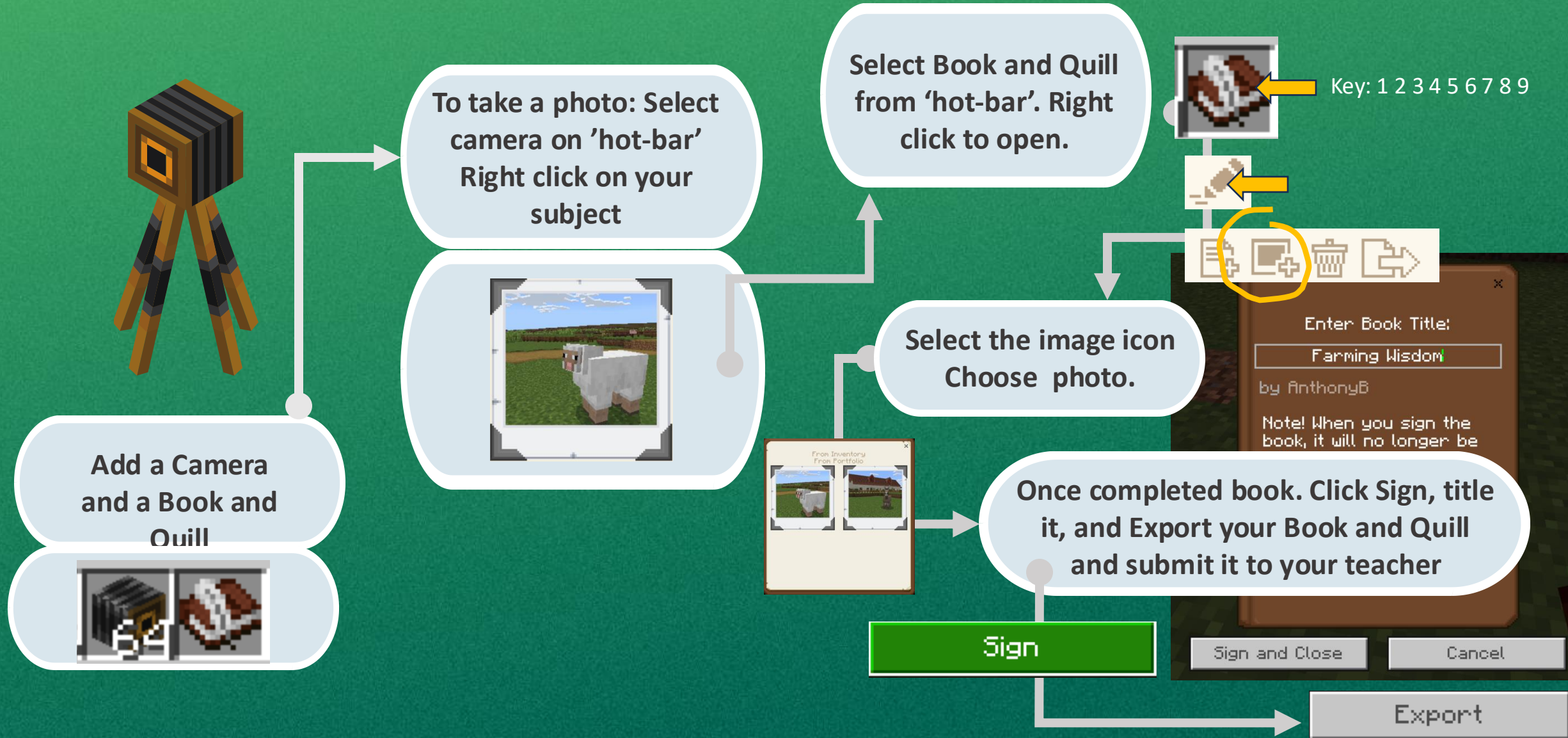
‘Left Click’ to select an
 item from your and
 drag it into your hot-
 bar for in-game use.

Left click item



Drag it to your hotbar

SPIRALING APPROACH: HOW ASSESSMENT PROGRESSES



Position: 2193, 117, 1308

Time to Explore!



Tikanga whakatōpū taonga
Museograph.nz

Planning and Best Practice

Tasks and Challenges



www.sowtheseed.org.nz

Projects and Challenges	Arable	Beef	Sheep	Dairy	Pipfruit	Kiwifruit
-------------------------	--------	------	-------	-------	----------	-----------



Build a Farm Challenge

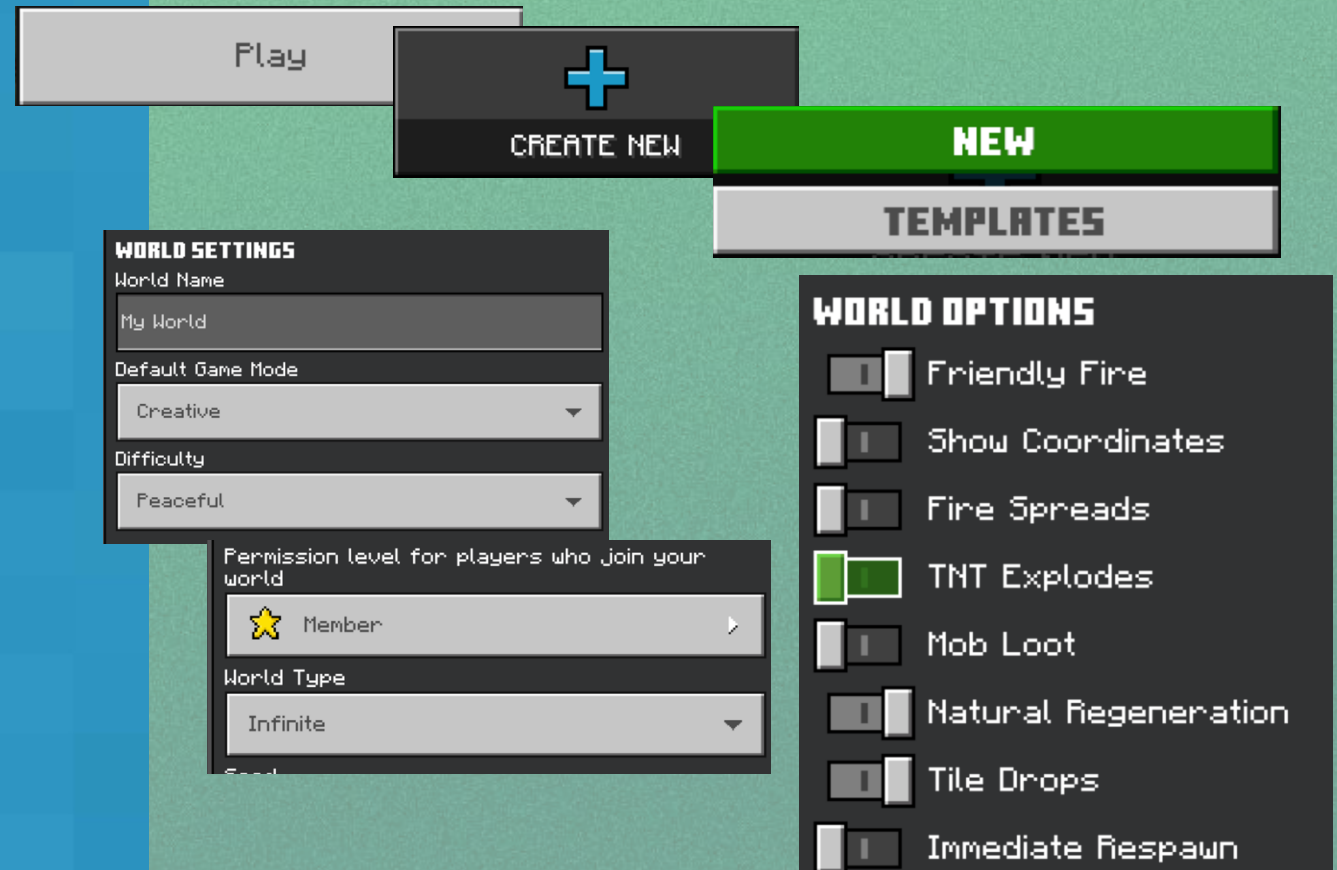
Students need to select an area of the farm and build their own farm operation in Minecraft. They can either work as a group in each area or individually with one world per 5 students.

There are 5 areas available in the Mātiki Hub. Students are given a colour before using the teleport to take them to their area to build. There is more space if you want to have more groups of students. The world will get slower the more students in the world.

Students must create a farm using the research they have gathered from the world and elsewhere. Their aim is to replicate, innovate and create their farm as accurately as they can in Minecraft. This can be challenging and they will need to find ways of doing this. This is all part of the experience and problem solving.

You could also get the original world Totara Origins (without the tasks, information and challenges)

How to set up a basic world for your class to join.



MINECRAFT

EDUCATION EDITION

CHEATS

- ☐ Activate Cheats
- ☐ Always Day
- ☐ Do Daylight Cycle
- ☐ Keep Inventory
- ☐ Mob Spawning
- ☒ Mob Griefing
- ☐ Entities Drop Loot
- ☐ Weather Cycle
- ☐ Command Blocks Enabled
- Random Tick Speed

CLASSROOM SETTINGS

- ☐ Allow Commands
- ☐ Code Builder
- ☐ Always Day
- ☐ Perfect Weather
- ☐ Keep Inventory
- ☐ Allow Mobs
- ☐ Allow Destructive Items
- ☐ Player Damage
- ☒ Player VS Player Damage
- ☐ Immutable World
- ☐ Show Border Effect

Host

JOIN C... Book & Quill

SHARE LINK

STOP HOSTING

Cyclone1

Share a Link

Share a link to invite other players to join your world. Please note: this link will only work while you are hosting.

<https://education.minecraft.net/joinworld/MyuzLDfAs...>

Microsoft

Any Questions

ANTHONY BREESE

MoE-Accredited PLD Facilitator / Microsoft Certified Consultant:

Mobile: +64 21 298 0810 | anthony@museograph.co.nz

[@breezy.bsky.social](https://www.bsky.social/@breezy.bsky.social) | [linkedin.com/in/anthonybreesse](https://www.linkedin.com/in/anthonybreesse) | [facebook.com/museography](https://www.facebook.com/museography)

www.museograph.co.nz



Suzy Newman

Agricultural and Horticultural
Science Advisor

BCom BCAPSc Grad Dip Tchg

- 027 275 6620
- s.newman@stpauls.school.nz
- hata.nz
- [hata](https://www.facebook.com/hata)



Tikanga whakatōpū taonga
Museograph.nz